

T @ 28A BS.  $\frac{20}{29} \frac{31}{32}$  0°00'00"

X RT. to (A) = 97°27'23"

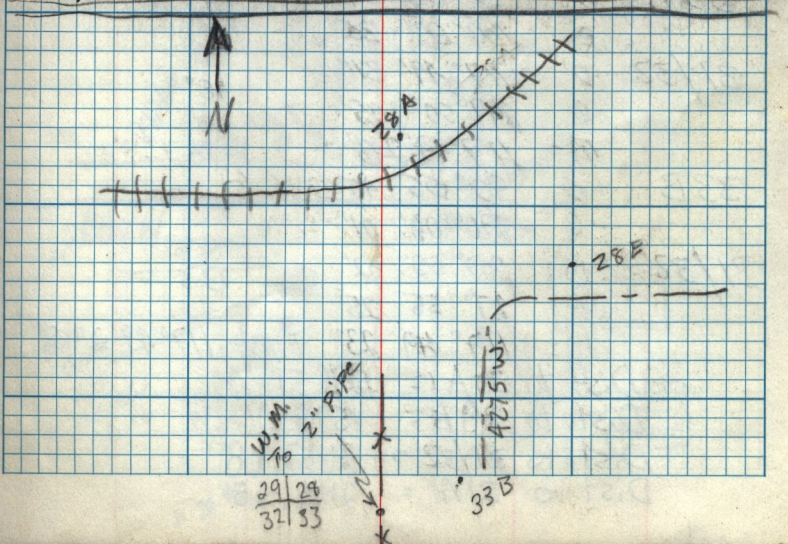
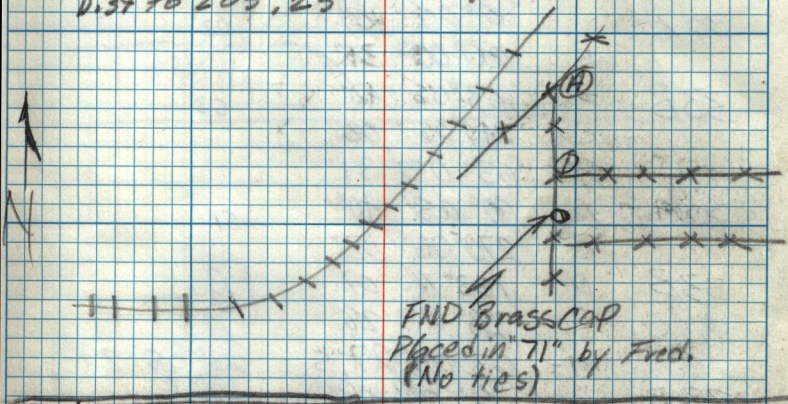
Dist to 153.21

X RT. to (D) 124°10'45"

Dist to 190.31

X RT. to (H) 129°03'54" Brass Cap

Dist to 205.25



$\frac{29}{32} \frac{29}{33}$

33B